

# HAVEN ESTATE

HOUSE & LAND PACKAGES  
FROM \$ 1,066,000.00\*

[www.havenestate.com.au](http://www.havenestate.com.au)  
Follow @havenestatensw

\$22k Off Haven  
House & Land  
Registered Lots\*



4  3  2 

MASTERTON

PALISADES 28  
NEW HAVEN FACADE  
LOT 217  
LAND 500M<sup>2</sup>

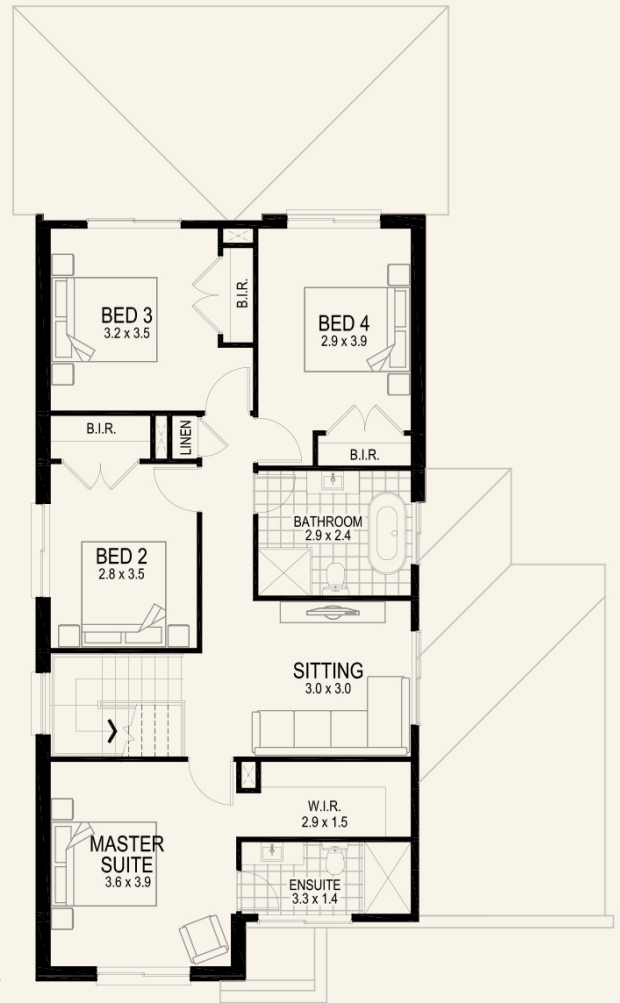
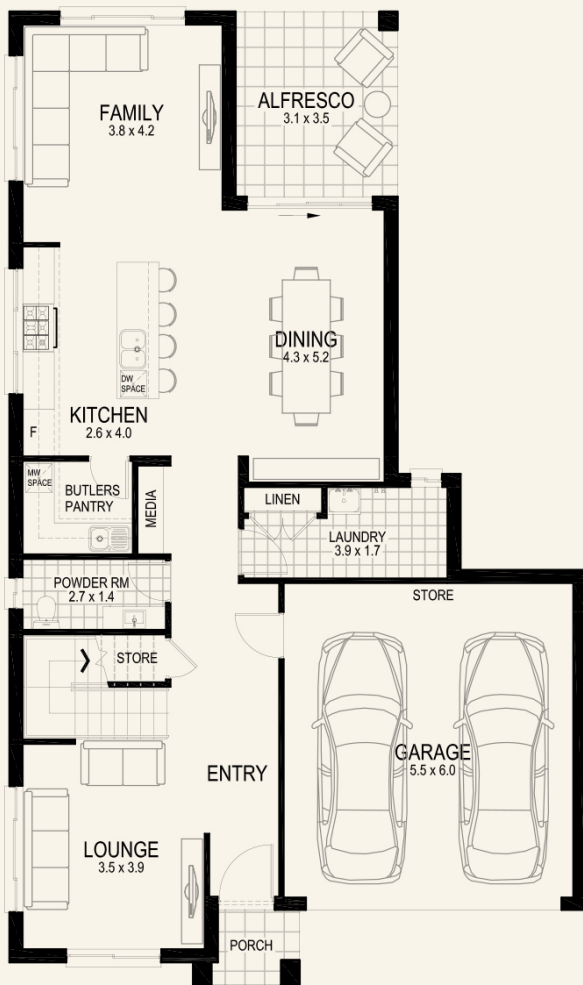
BUILDER LICENSE: 35 55 8C

## INCLUSIONS

- 20mm stone kitchen bench tops.
- 2.6m ceiling height to ground floor.
- Fujitsu ducted airconditioning.
- Concrete Driveway.
- BASIX Package.
- Choose your design and facade (subject to lot design)
- Fixed price site costs.
- Solar package now included.
- Registered land. Accelerate into construction.
- Whether you're looking to invest or create the perfect family haven, this package promises a hassle-free path to homeownership.
- For just a \$1,000 holding fee, you can secure a beautiful, spacious home and a prime piece of land in a sought after location.
- \$22,000 rebate promotion applicable upon settlement. Terms & condition apply.

For more information call  
Gina on 0415 521 964

# HAVEN ESTATE



All images and drawings including landscape plans are for illustrative purposes & should be used as a guide only. Purchasers are advised to refer to the Land Contract and/or Builders Tender and Contract for precise dimensions, specifications and inclusions, price may change subject to selected inclusions. Builder reserves the right to revise plans, specifications, materials and suppliers without notice. \*Terms & conditions apply, please see <https://havenestate.com.au/terms-conditions> for more details.