

# House & Land Package

LOT 411 | LOT SIZE 500M<sup>2</sup> | HAVEN 19 CONTEMPORARY



4 2 2

## \$852,750\*

HOUSE & LAND PACKAGE

## CLARENDON HOMES

FOR MORE INFORMATION

CALL GINA ON 0415 521 964

### Inclusions

- \$50,000 OFF Aspire Homes (already applied to price)
- 7 Star Basix
- 2600mm ceiling heights to ground floor
- Fully ducted air conditioning
- Upgrade to 6.6kw solar system
- Choice of Colourbond roof in lieu of selected roof tiles
- 20mm edge stone benchtop to kitchen
- SMEG appliances
- Soft closing drawers to kitchen and vanities
- Inline semi frameless shower screen
- Home security alarm system
- And much more!

All images and drawings including landscape plans are for illustrative purposes & should be used as a guide only. Purchasers are advised to refer to the Land Contract and/or Builders Tender and Contract for precise dimensions, specifications and inclusions. Builder reserves the right to revise plans, specifications, materials and suppliers without notice.

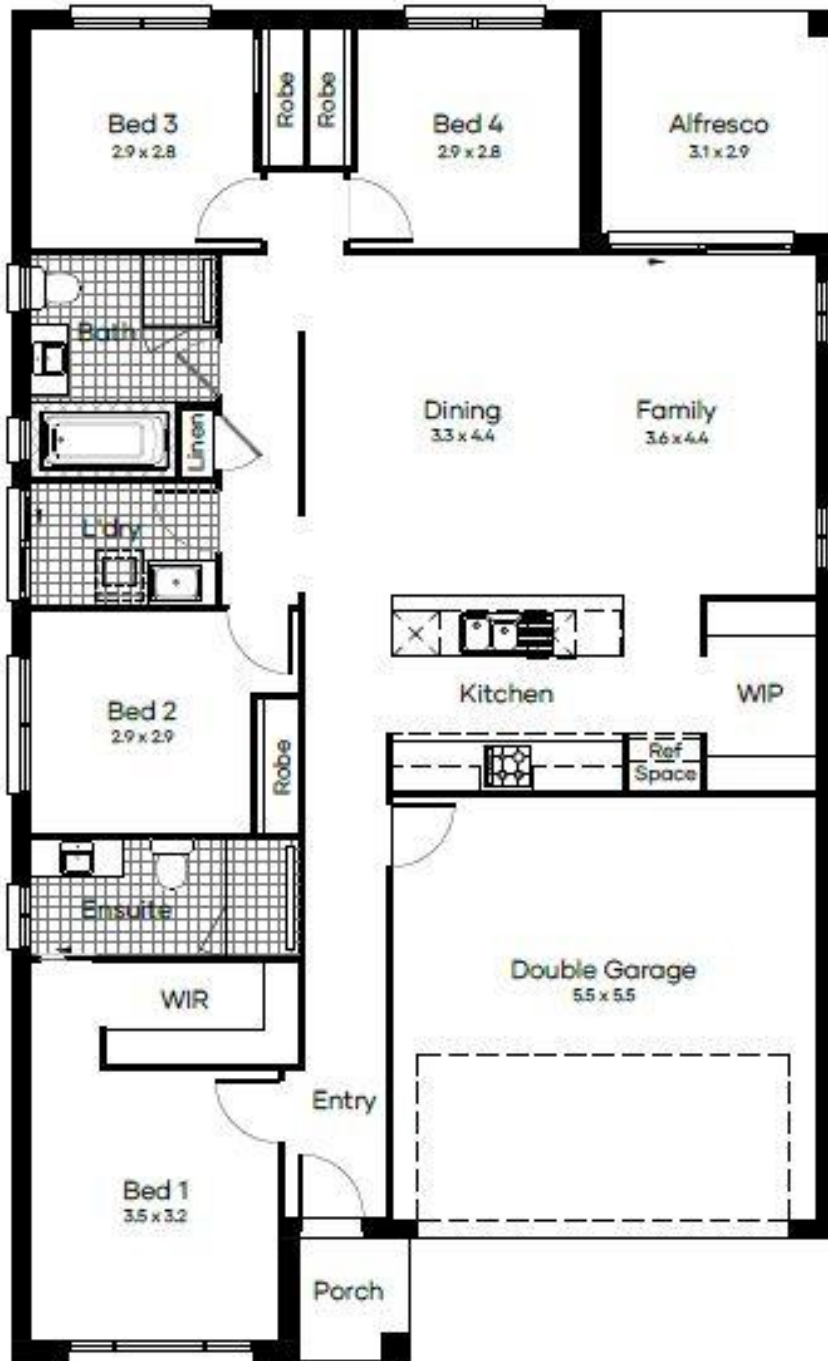
Explore your new haven

HAVENESTATE.COM.AU

HAVEN  
ESTATE

# House & Land Package

LOT 411 | LOT SIZE 500M<sup>2</sup> | HAVEN 19 CONTEMPORARY



Explore your new haven

HAVENSTATE.COM.AU

HAVEN

ESTATE